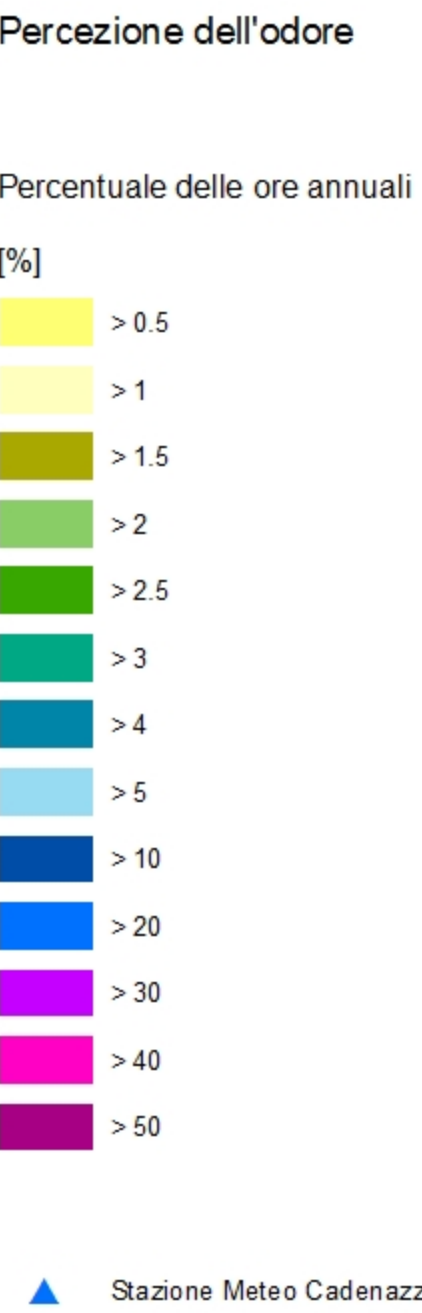
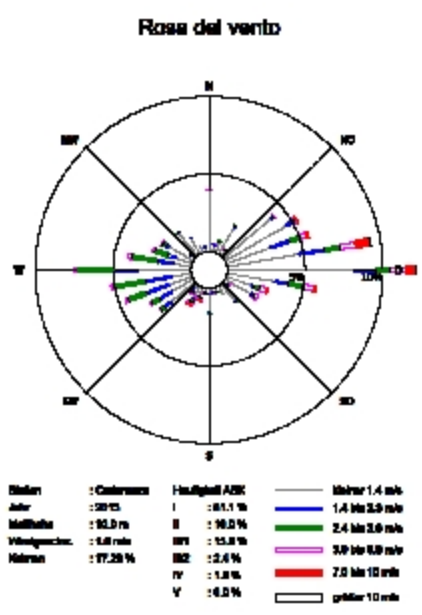
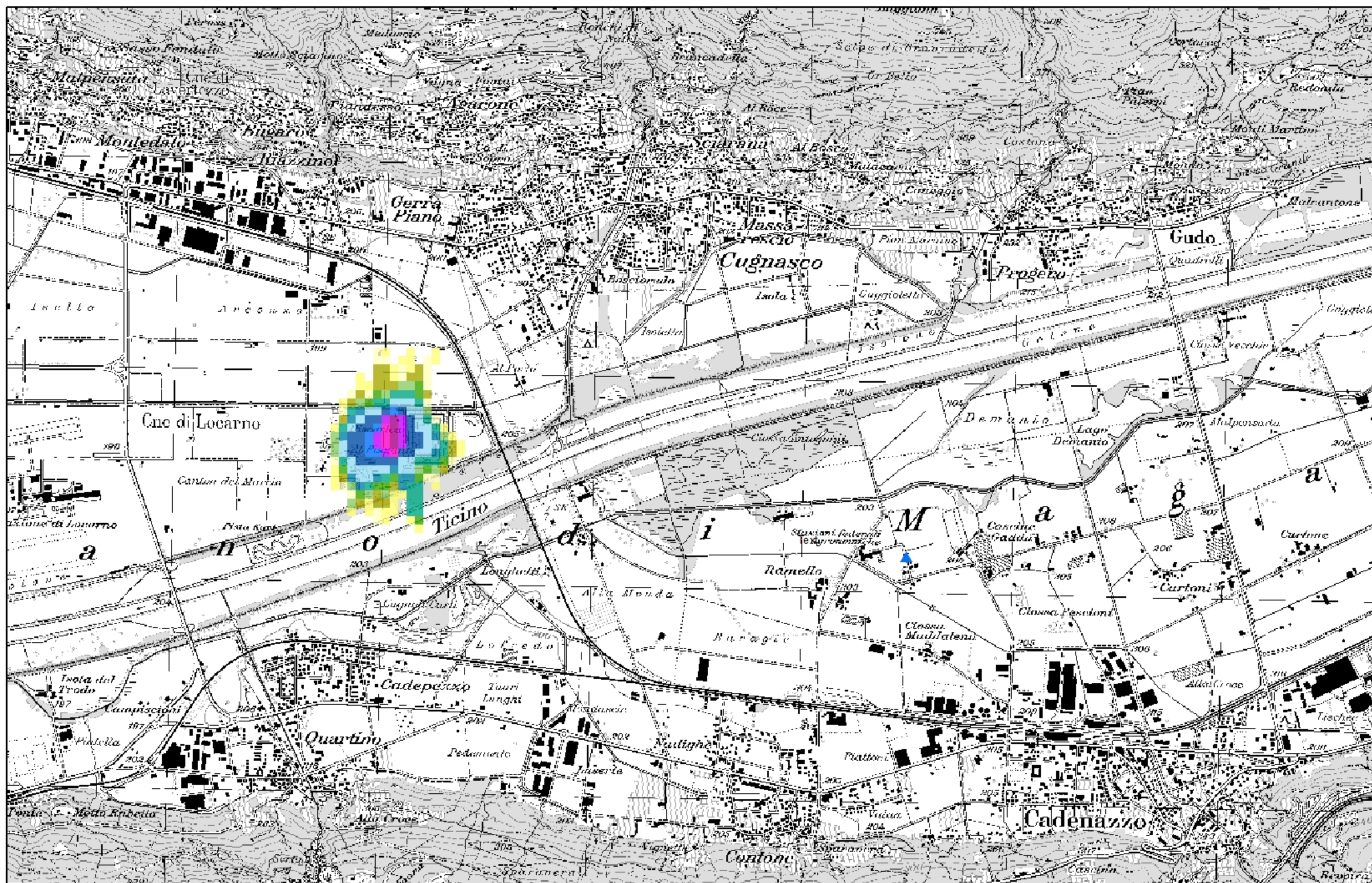


Scenario 1NC



WinAustal Pro V1.2.0.8
Austal2000

Area: 9120m x 2400 m
Level: 1 (0-3m)
odor-j00z1-3.dmna

Grid: 40/80/160m

DGM: 100m

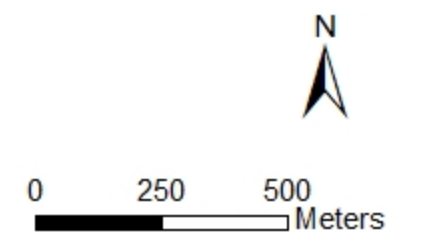
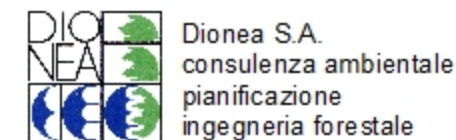
22.02.2016

RIA 1° fase impianto di compostaggio c/o Pizzante

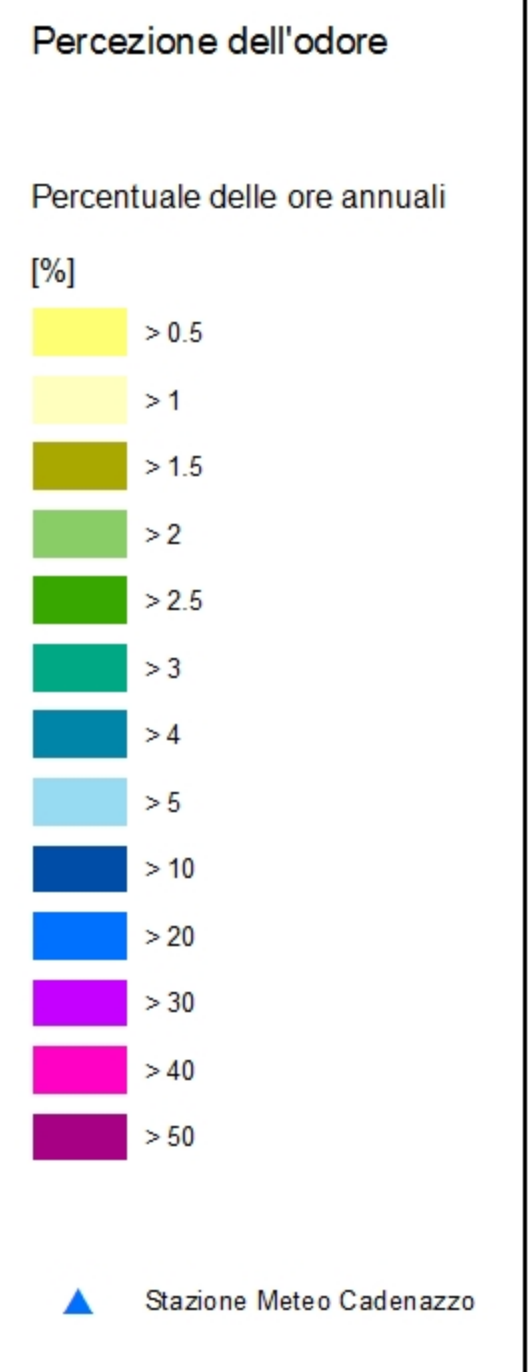
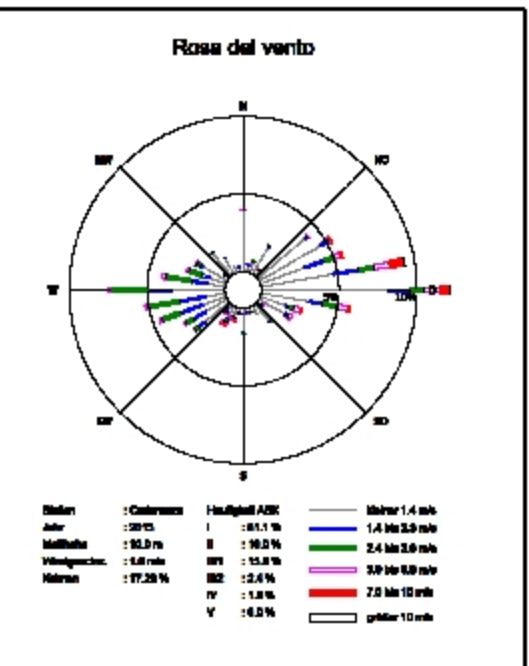
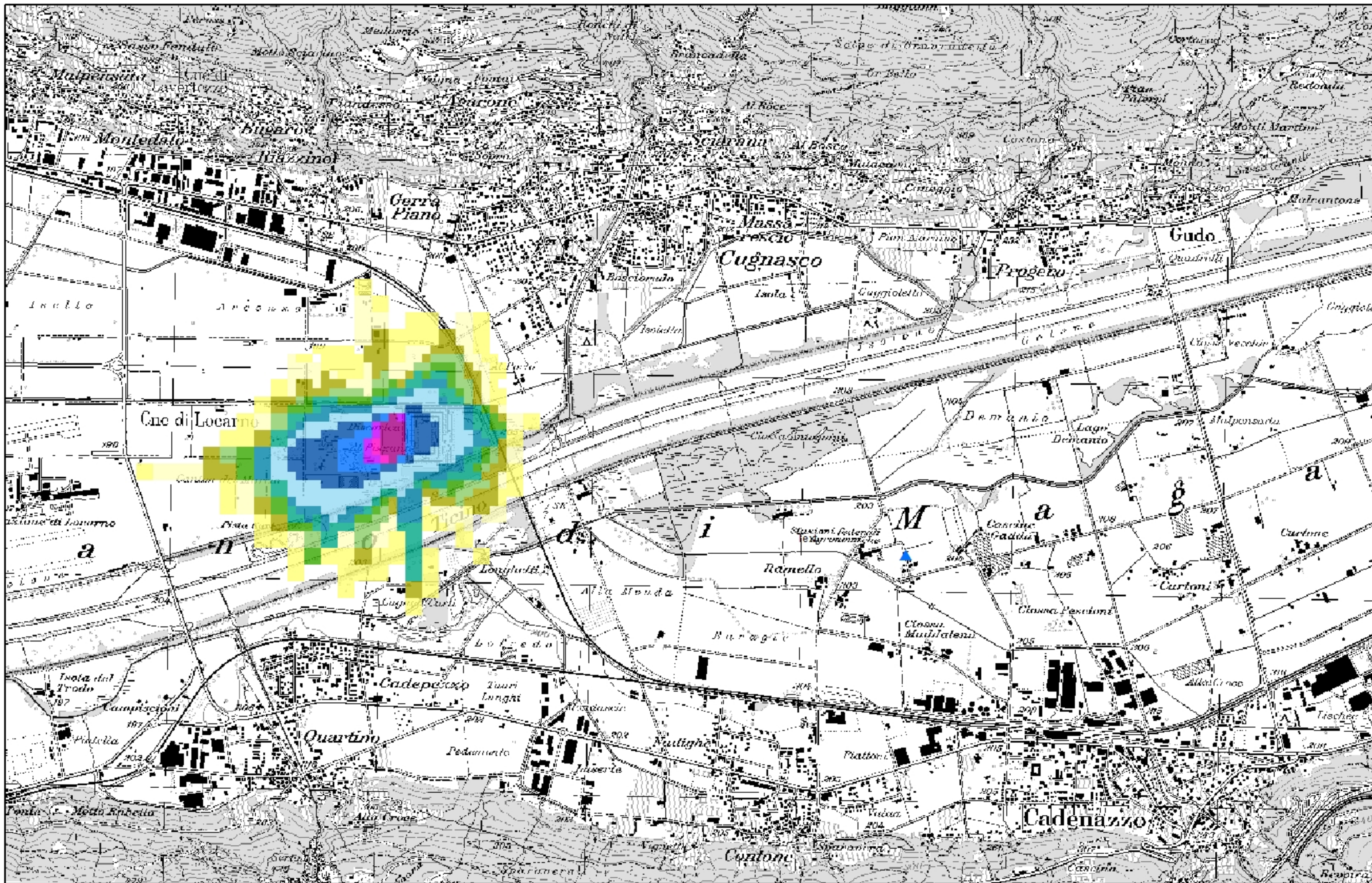
Scenario 1NC

Compostaggio con impianto biogas

2.38 MUO/h



Scenario 2NC



WinAustal Pro V1.2.0.8
Austal2000

Area: 9120m x 2400 m
Level: 1 (0-3m)
odor-j00z1-3.dmna

Grid: 40/80/160m

DGM: 100m

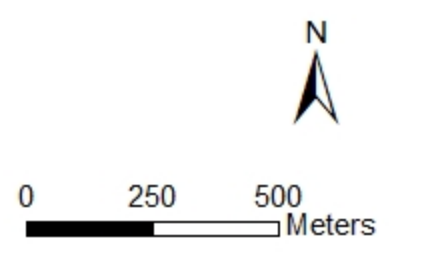
22.02.2016

RIA 1° fase impianto di compostaggio c/o Pizzante

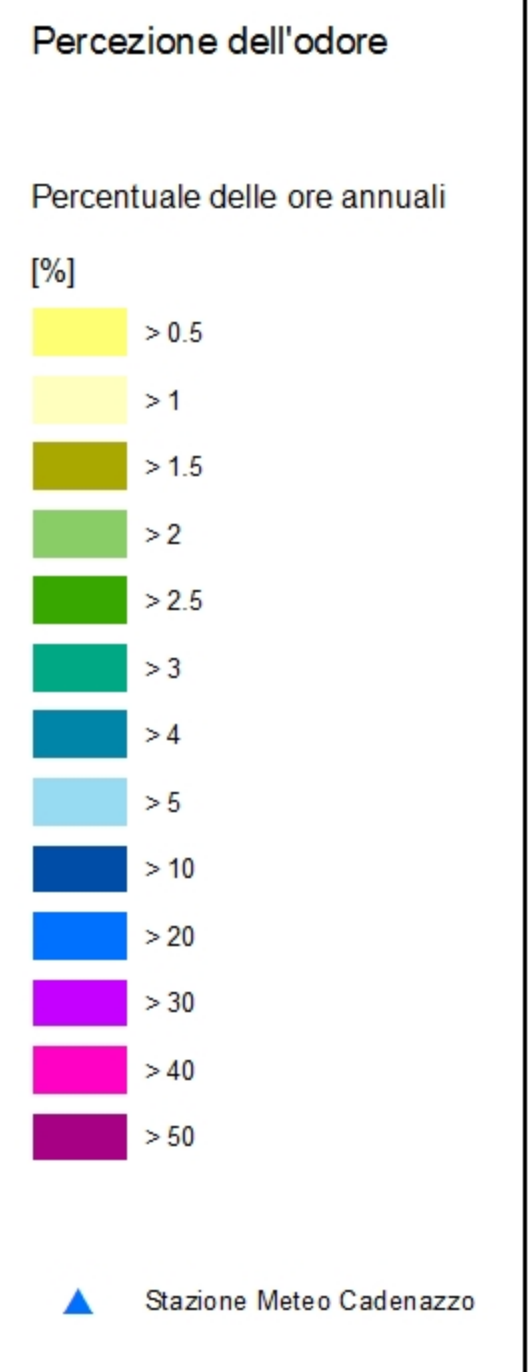
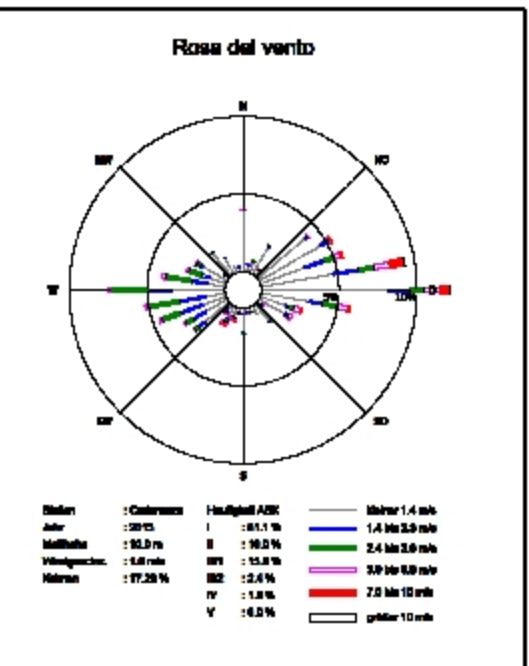
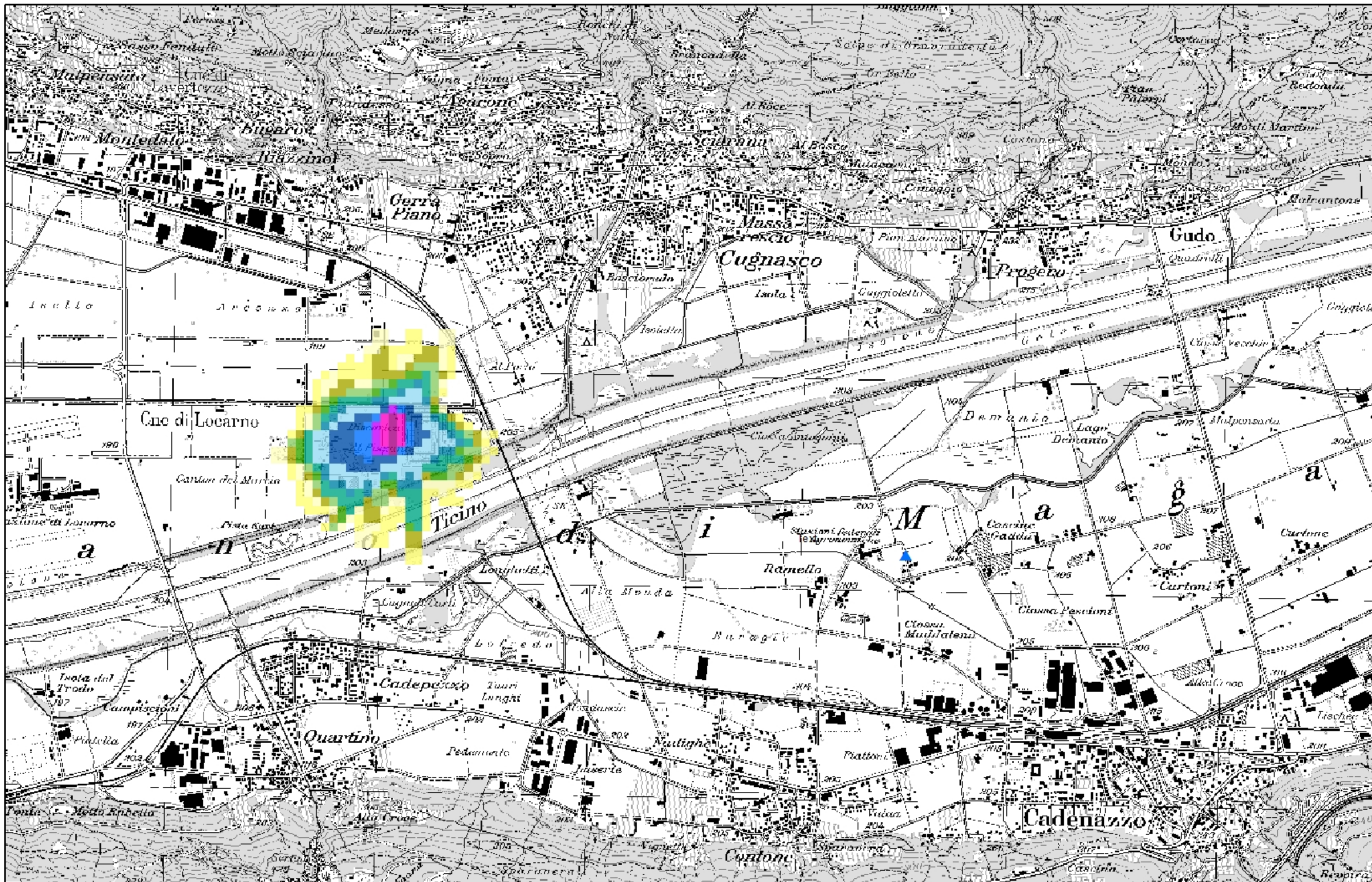
Scenario 2NC

Compostaggio all'aperto, senza impianto biogas

6.43 MUO/h



Scenario 1WC



WinAustal Pro V1.2.0.8
Austal2000

Area: 9120m x 2400 m
Level: 1 (0-3m)
odor-j00z1-3.dmna

Grid: 40/80/160m

DGM: 100m

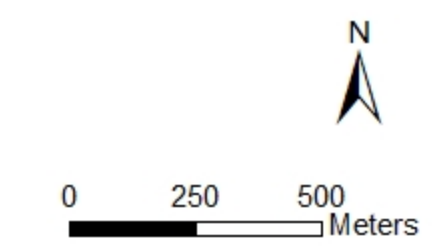
22.02.2016

RIA 1° fase impianto di compostaggio c/o Pizzante

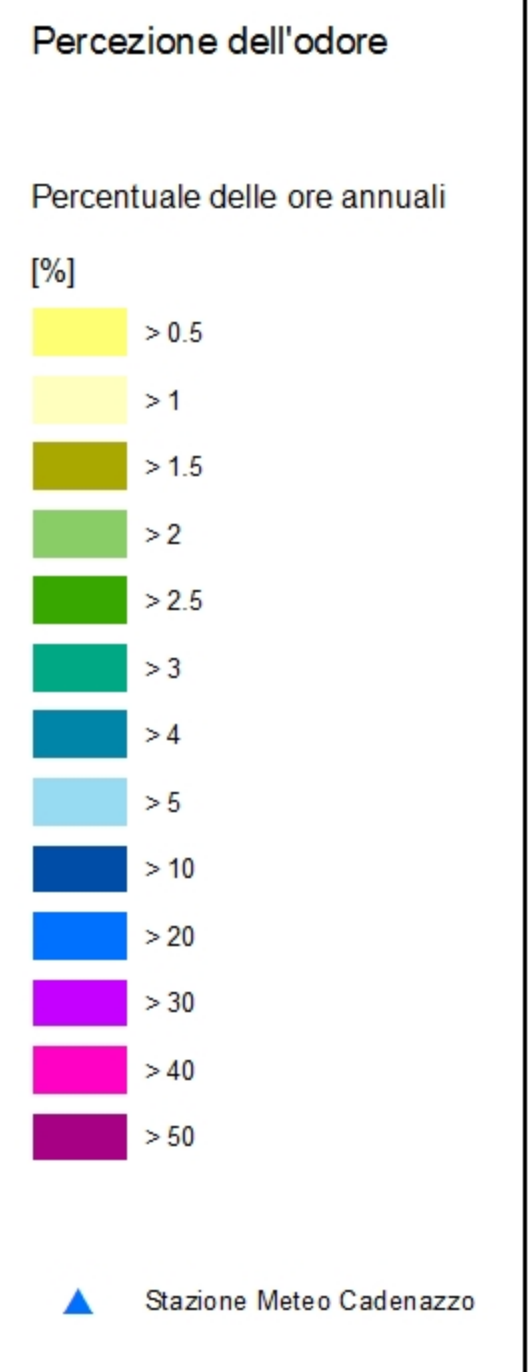
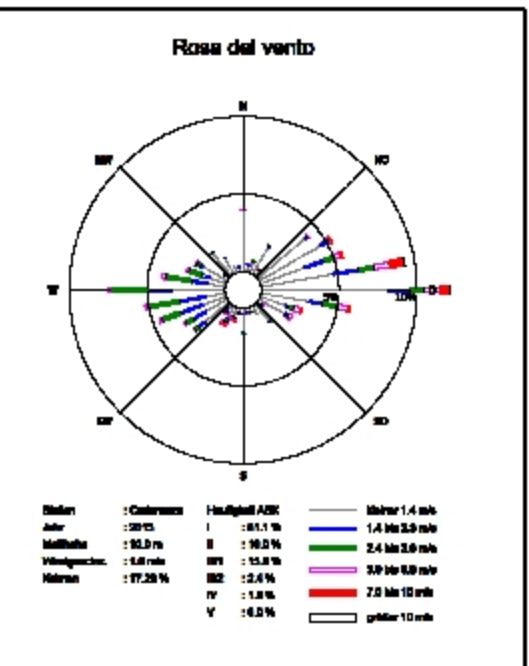
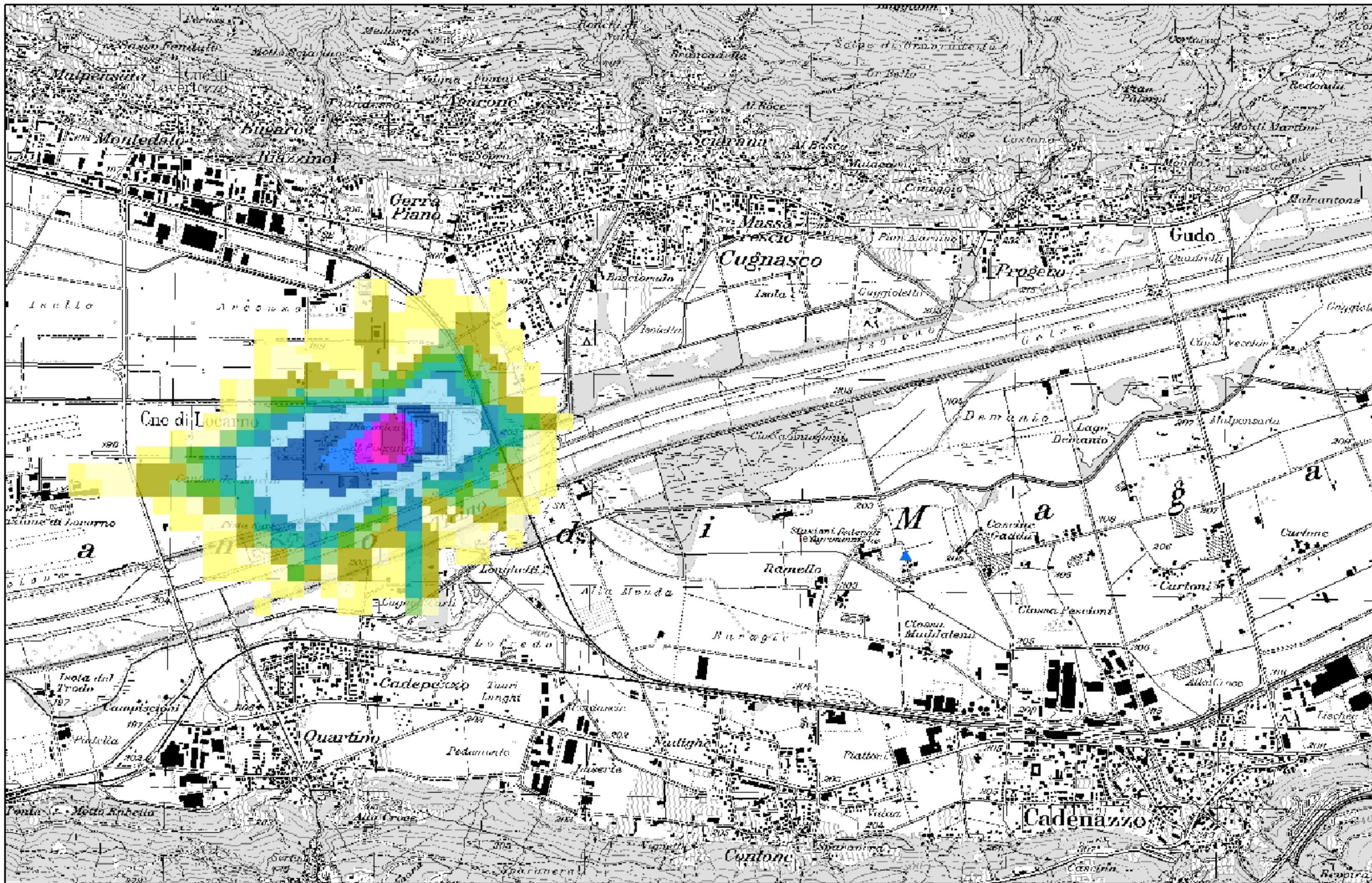
Scenario 1WC

Compostaggio con impianto biogas (si assume la rottura del biofiltro)

3.69 MUO/h



Scenario 2WC



WinAustal Pro V1.2.0.8
Austal2000

Area: 9120m x 2400 m
Level: 1 (0-3m)
odor-j00z1-3.dmna

Grid: 40/80/160m

DGM: 100m

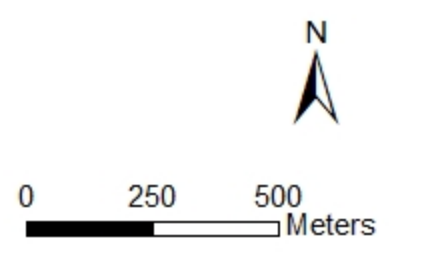
22.02.2016

RIA 1° fase impianto di compostaggio c/o Pizzante

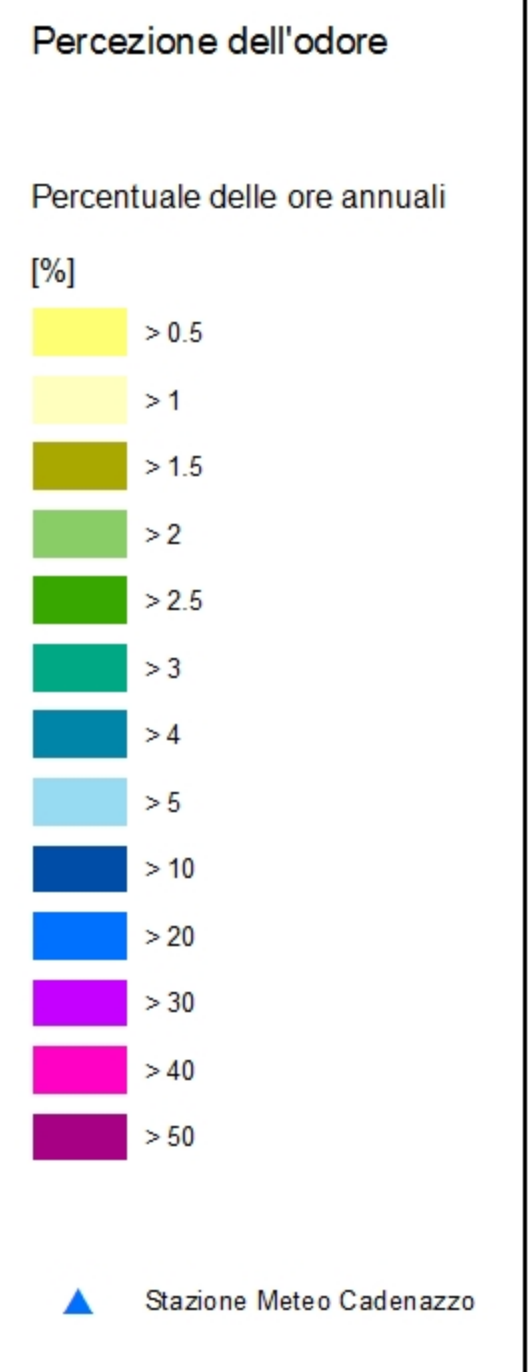
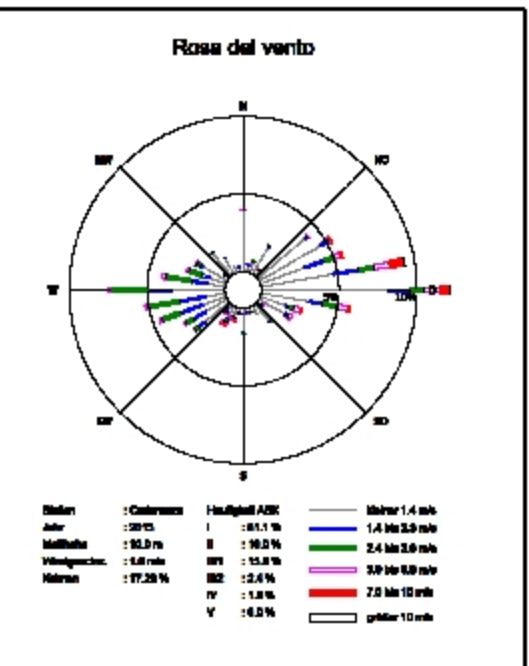
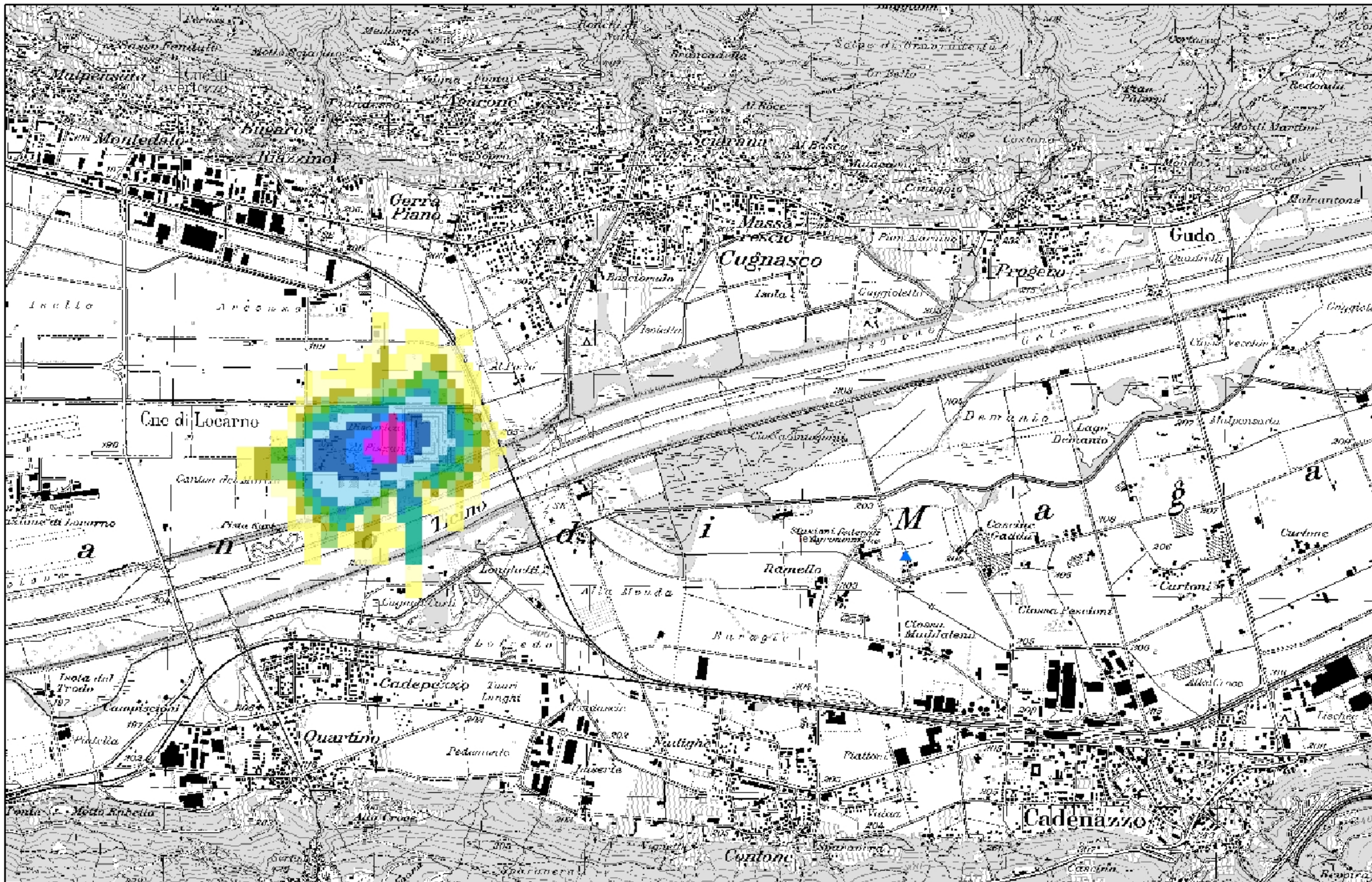
Scenario 2WC

Compostaggio all'aperto

9.01 MUO/h



Scenario 2WCm



WinAustal Pro V1.2.0.8
Austal2000

Area: 9120m x 2400 m
Level: 1 (0-3m)
odor-j00z1-3.dmna

Grid: 40/80/160m

DGM: 100m

22.02.2016

RIA 1° fase impianto di compostaggio c/o Pizzante

Scenario 2WCm

Compostaggio all'aperto, con misure di mitigazione

4.52 MUO/h

